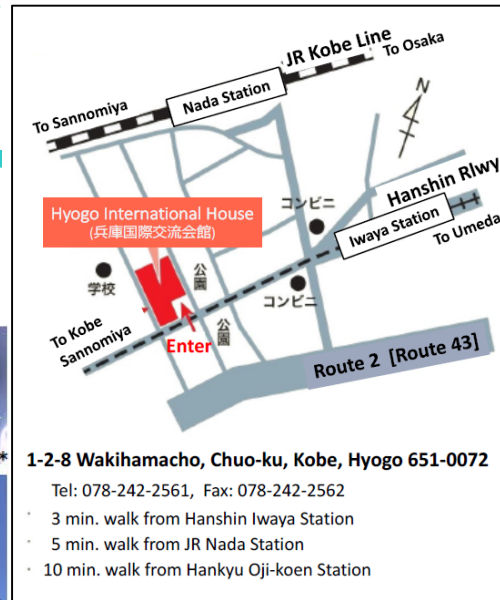
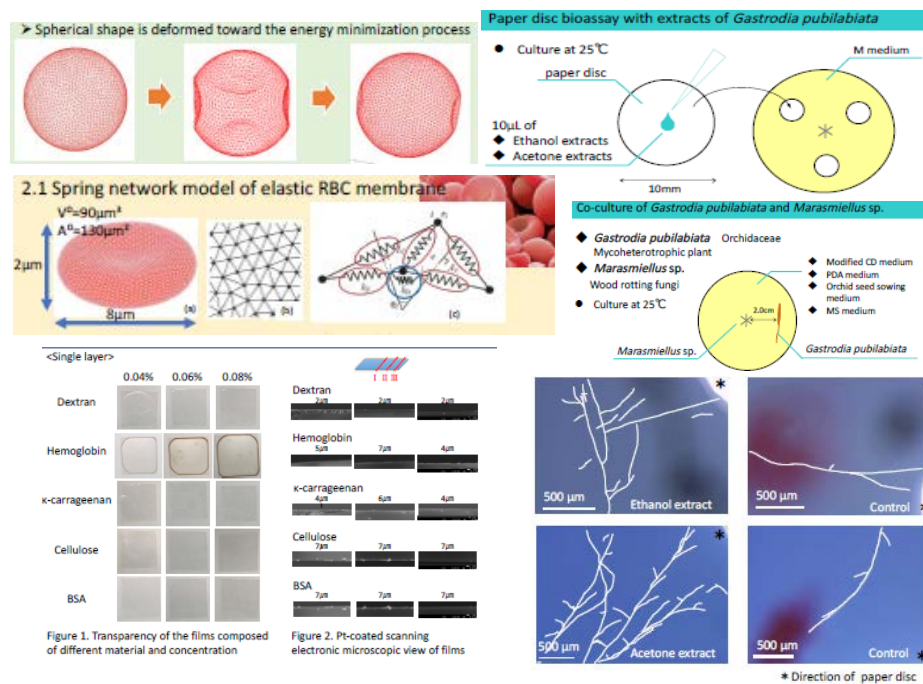


Join us for the 25th Hyogo Science E-café: Student Presentations!



New location: G-Navi Commons, Hyogo International House
Sunday, September 30th 15:30 – 18:00

Join us for three research presentations by high school students and group discussions over FREE snacks and drinks!

Effect of Substances Secreted from the Roots of the Mycoheterotrophic Plant *Gastrodia pubilabiata* on the Growth of its Mycorrhizal Fungi

In this study, the hyphal growth of the symbiotic fungi of the mycoheterotrophic plants, *Gastrodia pubilabiata* were examined under several conditions. It was suggested that plants produce chemical signals to establish symbiosis.

Preparation of biodegradable structural color multi-layer films composed of biopolymers using a cast method

My research is to develop structurally colored multi-layer films composed of biodegradable biopolymers. To produce proportional multi-layers, we used a cast method.

A simulation study of red blood cell deformation and destruction caused by mechanical effect

This study aims to reveal the destruction process of the red blood cell by tank-treading motion and clarify the mechanism behind this process by using computer simulation.

To register, e-mail your name to The Kobe University Science Shop at:

HSE-CAFE@RADIX.H.KOBE-U.AC.JP

Register by Friday September 28th.

Space is limited to the first 35 people. **PARTICIPATION IS FREE!**

Any information you provide will only be used for the organization of this event.
お申し込みの際お送りいただきます個人情報は、この催しの運営管理にのみ利用させていただきます。